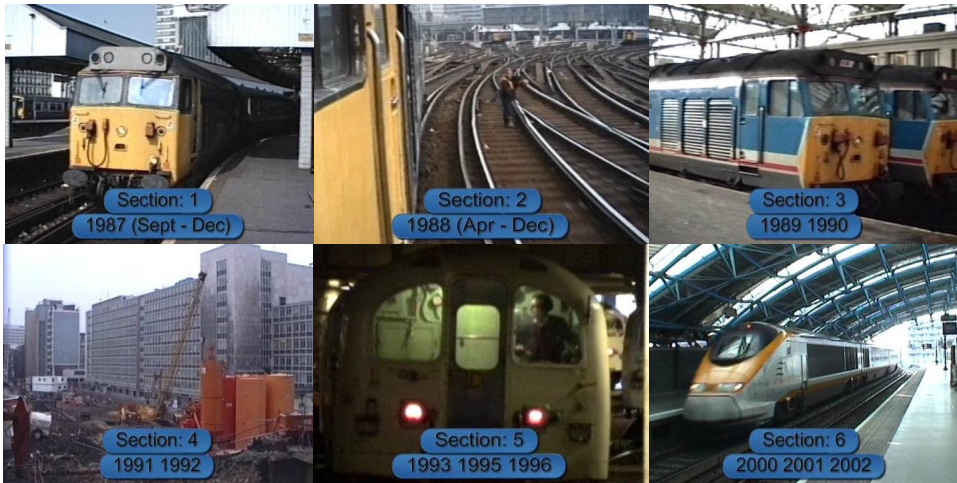


AVWAT - Contents



- Section 1: 1987 (Sept - Dec)
- Section 2: 1988 (Apr - Dec)
- Section 3: 1989 1990
- Section 4: 1991 1992
- Section 5: 1993 1995 1996
- Section 6: 2000 2001 2002

Sections 1 to 4 are based around the Class 50 and 73 locomotive hauled arrivals and departures.
Section 5 shows a journey from Waterloo to Bank and the introduction of services at Waterloo International.
Section 6 brings us into the early 21st century.



Running time of this DVD-R is 63 minutes
Copyright ©Anbrico Felixjaz 2009
- St Giles Way - Copmanthorpe - York - YO23 3XT -
More details available on: www.anbrico.com

Anbrico – AVWAT

This is Waterloo (1987 – 2002) DVD

This is Waterloo (1987 – 2002)



AVWAT
Anbrico

